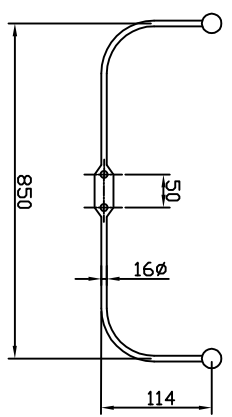
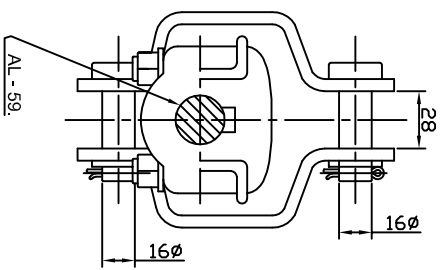
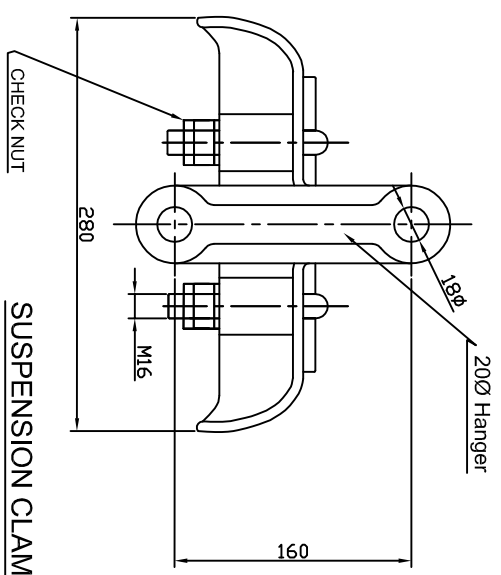


3



4



NOTES:-

- 1 - ALL DIMENSIONS ARE IN MM.
- 2 - GENERAL TOLERANCEN AS PER IS
- 3 - MECH. FAILING LOAD = 50% OF UTS OF CONDUCTOR.
- 5 - SLIP STRENGTH = 8 TO 15% UTS OF CONDUCTOR.
- 6 - IS: 2486 - 1993.

SR. NO.	DESCRIPTION	QTY.	SPECIFICATION
3	ARCING HORN.	1	M. S. HDG.
2	SOCKET EYE.	1	FORGED STEEL. HDG.
1	BALL LINK.	1	FORGED STEEL. HDG.
4	SUSPENSION CLAMP	1	ALUMINIUM ALLOY & STEEL.
5	R - CLIP.	1	ST. STEEL. / P. B.
6	SPLIT PIN.	2	BRASS / S.S.

TENDER PURPOSE

GUJARAT ENERGY TRANSMISSION CORPN.LTD.
S.P.VIDYUT BHAVAN, RACE COURSE,
VADODHA-390 007

SINGLE SUSPENSION
HARDWARE FOR AL-59.

DRAWN	CHECKED	APPD	DATE	DRG. NO.	GETCO. / E /	SHEET
SCALE	DATE	2L-STD / AL59HWSSM / 001	1 OF 1	REV.	AS	RO